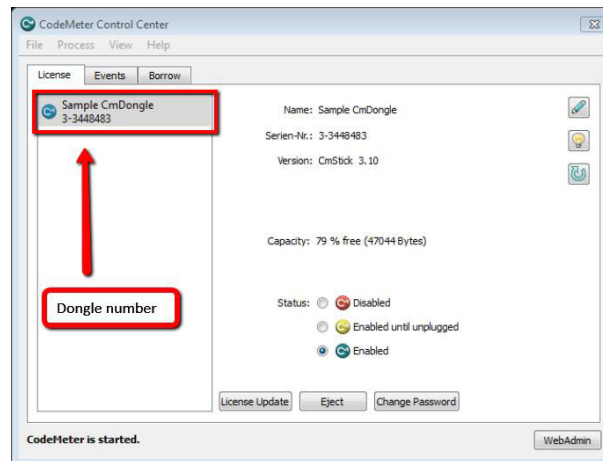


Find the number of the CM-Stick (dongle)

The number of the CM stick is the most important identifier of the license. This document describes how to find this number. The number is always in the format X-XXXXXXX.

The CM-Stick is connected to the computer

When the CM stick is connected to the computer, the number can be read in the CodeMeter Control Center. Start the Control Center in "Windows Start - All Program - CodeMeter".



The CM-Stick drive is not connected to the computer

The number is also printed directly on the dongle.

